



3/4" EV4

10-125 l/min (2-33 US gpm)



1 1/2" & 2" EV4

30-800 l/min (8-208 US gpm)



2 1/2" EV4

500-1530 l/min (130-400 US gpm)

Characteristics

Operation	Medium	Operating pressure
solenoid,	hydraulic	3/4" 8-70 bar (116-1015 psi)
electrical	oil	1 1/2" / 2" 8-70 bar (116-1015 psi)
		2 1/2" 8-68 bar (116- 986 psi)

Oil temperature range: 20°-70°C (68-158°F) - (depending on viscosity grade of oil).
Coil insulation class ~/=: IP 68.

Description

EV4 is an easy to install, reliable and precise solution that provides up to 65% energy savings and 48% less fluid heating. It uses a L1000H drive in the up travel, while the down travel is managed by the EV4 valve itself. In this way, the EV4-vvfv solution offers the most cost-effective and energy-efficient solution and eliminates high inrush currents. It is suitable for energy-saving applications, extreme load/temperature variations and is a perfect solution for modernisations.

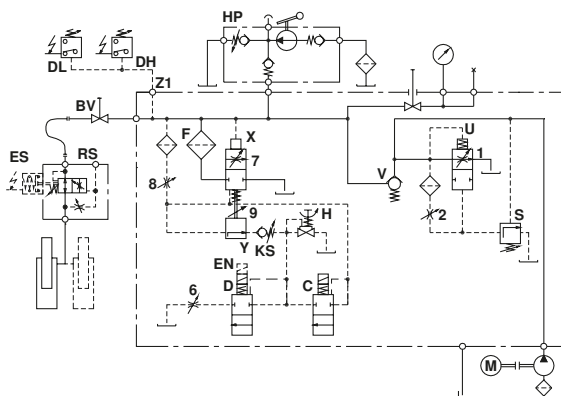
UP direction

The elevator runs with four UP speeds up to 1 m/s (200 fpm), three full speeds and one levelling speed.
All UP functions (UP start, speeds, transition times and UP stop) are adjusted by inverter parameters.

DOWN direction

The elevator runs with two DOWN speeds up to 1 m/s (200 fpm), one full speed and one levelling speed.
All DOWN functions are smooth and adjustable.

Hydraulic circuit



Electrical sequence

