



**3/4" EV100**

10-125 l/min (2-33 US gpm)



**1 1/2" & 2" EV100**

30-800 l/min (8-208 US gpm)



**2 1/2" EV100**

500-1530 l/min (130-400 US gpm)

### Characteristics

Operation	Medium	Operating pressure	Operating pressure CSA
solenoid,	hydraulic	3/4" 8-100 bar (116-1450 psi)	3/4" 8-100 bar (116-1450 psi)
electrical	oil	1 1/2"/2" 8-100 bar (116-1450 psi)	1 1/2"/2" 8- 70 bar (116-1015 psi)
		2 1/2" 8- 68 bar (116- 986 psi)	2 1/2" 8- 47 bar (116- 690 psi)

Oil temperature range: 20°-70°C (68-158°F) - (depending on viscosity grade of oil).

Coil insulation class ~/= IP 68.

### Description

Easy to install, EV's are smooth, reliable and precise in operation throughout extreme load and temperature variations. According to customers' information, valves are factory adjusted ready for operation and very simple to readjust if so desired. The up levelling system combined with compensated pilot control ensure stability of elevator operation and accuracy of stopping. Depending on the flow, available port sizes are 3/4", 1 1/2", 2" and 2 1/2" pipe threads.

### UP direction

The elevator runs with two UP speeds up to 1 m/s (200 fpm), one full speed and one levelling speed.

All UP functions are smooth and adjustable.

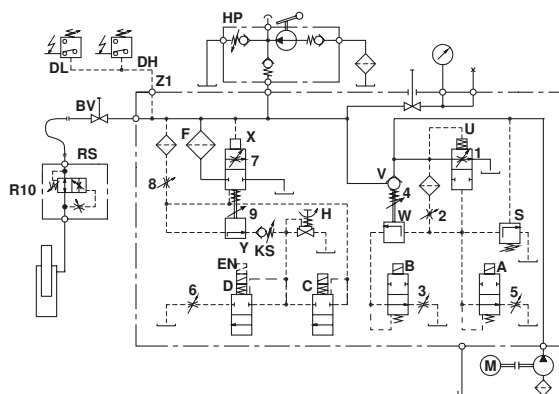
The UP stop is smooth and exact through valve operation, because the motor is running approx. 1 second longer through a time relay.

### DOWN direction

The elevator runs with two DOWN speeds up to 1 m/s (200 fpm), one full speed and one levelling speed.

All DOWN functions are smooth and adjustable.

**Hydraulic circuit**



**Electrical sequence**

