



- Up:** One speed
- Down:** Two speeds
- Max speed:** 0.16 m/s (32 fpm)
- Max flow:** 80 l/min (21 US gpm) with soft stop

KV2S

Characteristics

Operation	Medium	Operating pressure	Flow rate
solenoid, electrical	hydraulic oil	8–100 bar (116–1450 psi)	Min: 8 l/min (2 US gpm) Max: 80 l/min (21 US gpm)

Oil temperature range: 20°–70°C (68–158°F) - (depending on viscosity grade of oil).
Coil insulation class ~/=: IP 68.

Description

KV valves are easy to adjust, compact & simple in design.
KV2S is suitable for home lifts & goods lifts with two down speeds.

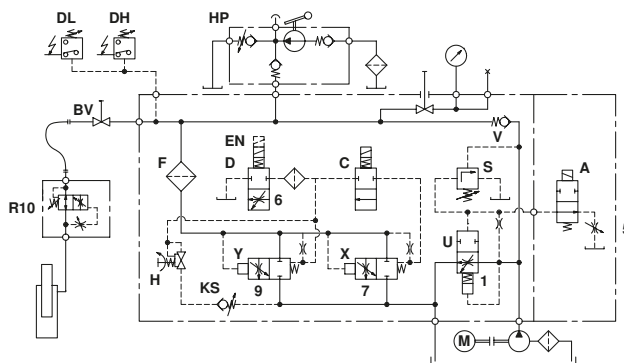
UP direction

The elevator runs with one UP speed up to 0.16 m/s (32 fpm) with an adjustable soft stop or up to 0.4 m/s (80 fpm) with overtravel and releveling.
The UP start has built-in damping.
The UP stop has adjustable damping (delayed motor stop required).

DOWN direction

The elevator runs with two DOWN speeds up to 1 m/s (200 fpm), one full speed and one levelling speed. The DOWN full speed and levelling speed are adjustable.
The DOWN start has adjustable damping.
The braking and stopping have built-in damping.

Hydraulic circuit



Electrical sequence

