



- Up:** One speed
- Down:** Two speeds
- Max speed:** 0.16 m/s (32 fpm)
- Max flow:** 80 l/min (21 US gpm)

**KV2P**

## Characteristics

Operation	Medium	Operating pressure	Flow rate
solenoid, electrical	hydraulic oil	8–100 bar (116–1450 psi)	Min: 8 l/min (2 US gpm) Max: 80 l/min (21 US gpm)

Oil temperature range: 20°-70°C (68-158°F) - (depending on viscosity grade of oil).  
Coil insulation class ~/=: IP 68.

## Description

KV valves are easy to adjust, compact & simple in design.  
KV2P is suitable for home lifts & goods lifts with two down speeds.

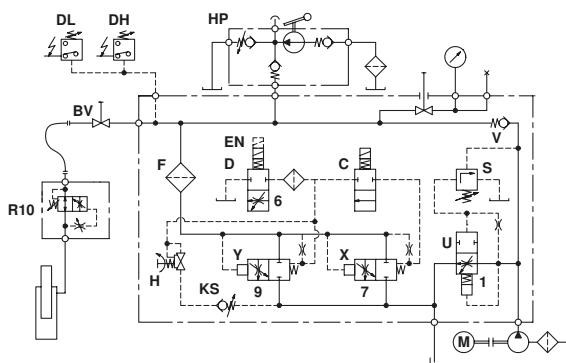
## UP direction

The elevator runs with one UP speed up to 0.16 m/s (32 fpm).  
The UP start has built-in damping.  
The UP stop is caused by de-energizing the motor.

## DOWN direction

The elevator runs with two DOWN speeds up to 1 m/s (200 fpm), one full speed and one levelling speed. The DOWN full speed and levelling speed are adjustable.  
The DOWN start has adjustable damping.  
The slow down and DOWN stop have built-in damping.

Hydraulic circuit



Electrical sequence

