



KV1S

- Up:** One speed
- Down:** One speed
- Max speed:** 0.16 m/s (32 fpm)
- Max flow:** 80 l/min (21 US gpm)
with soft stop

Characteristics

Operation	Medium	Operating pressure	Flow rate
solenoid, electrical	hydraulic oil	8–100 bar (116–1450 psi)	Min: 8 l/min (2 US gpm) Max: 80 l/min (21 US gpm)

Oil temperature range: 20°–70°C (68–158°F) - (depending on viscosity grade of oil).
Coil insulation class ~/=: IP 68.

Description

KV valves are easy to adjust, compact & simple in design.
KV1S is suitable for platform & goods lifts.

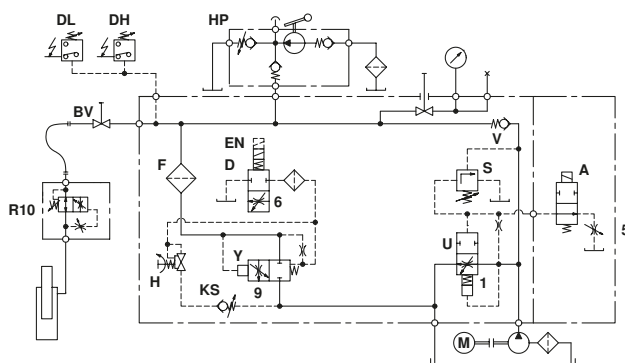
UP direction

The elevator runs with one UP speed up to 0.16 m/s (32 fpm) with an adjustable soft stop or up to 0.4 m/s (80 fpm) with overtravel and relevelling.
The UP start has built-in damping.
The UP stop has adjustable damping (delayed motor stop required).

DOWN direction

The elevator runs with one DOWN speed up to 0.16 m/s (32 fpm).
The DOWN start has adjustable damping and the DOWN speed is adjustable.
The DOWN stop has built-in damping.

Hydraulic circuit



Electrical sequence

