



KV1P

- Up:** One speed
- Down:** One speed
- Max speed:** 0.16 m/s (32 fpm)
- Max flow:** 80 l/min (21 US gpm)

## Characteristics

| Operation            | Medium        | Operating pressure       | Flow rate  |
|----------------------|---------------|--------------------------|--|
| solenoid, electrical | hydraulic oil | 8–100 bar (116–1450 psi) | Min: 8 l/min (2 US gpm)<br>Max: 80 l/min (21 US gpm) |

Oil temperature range: 20°-70°C (68-158°F) - (depending on viscosity grade of oil).  
Coil insulation class ~/=: IP 68.

## Description

KV valves are easy to adjust, compact & simple in design.  
KV1P is suitable for platform & goods lifts.

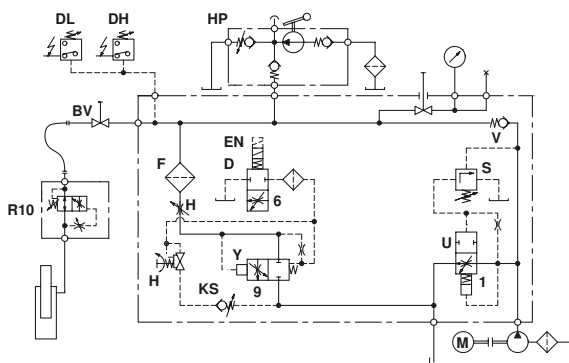
## UP direction

The elevator runs with one UP speed up to 0.16 m/s (32 fpm).  
The UP start has built-in damping.  
The UP stop is caused by de-energizing the motor.

## DOWN direction

The elevator runs with one DOWN speed up to 0.16 m/s (32 fpm).  
The DOWN start has adjustable damping and the DOWN speed is adjustable.  
The DOWN stop has built-in damping.

Hydraulic circuit



Electrical sequence

